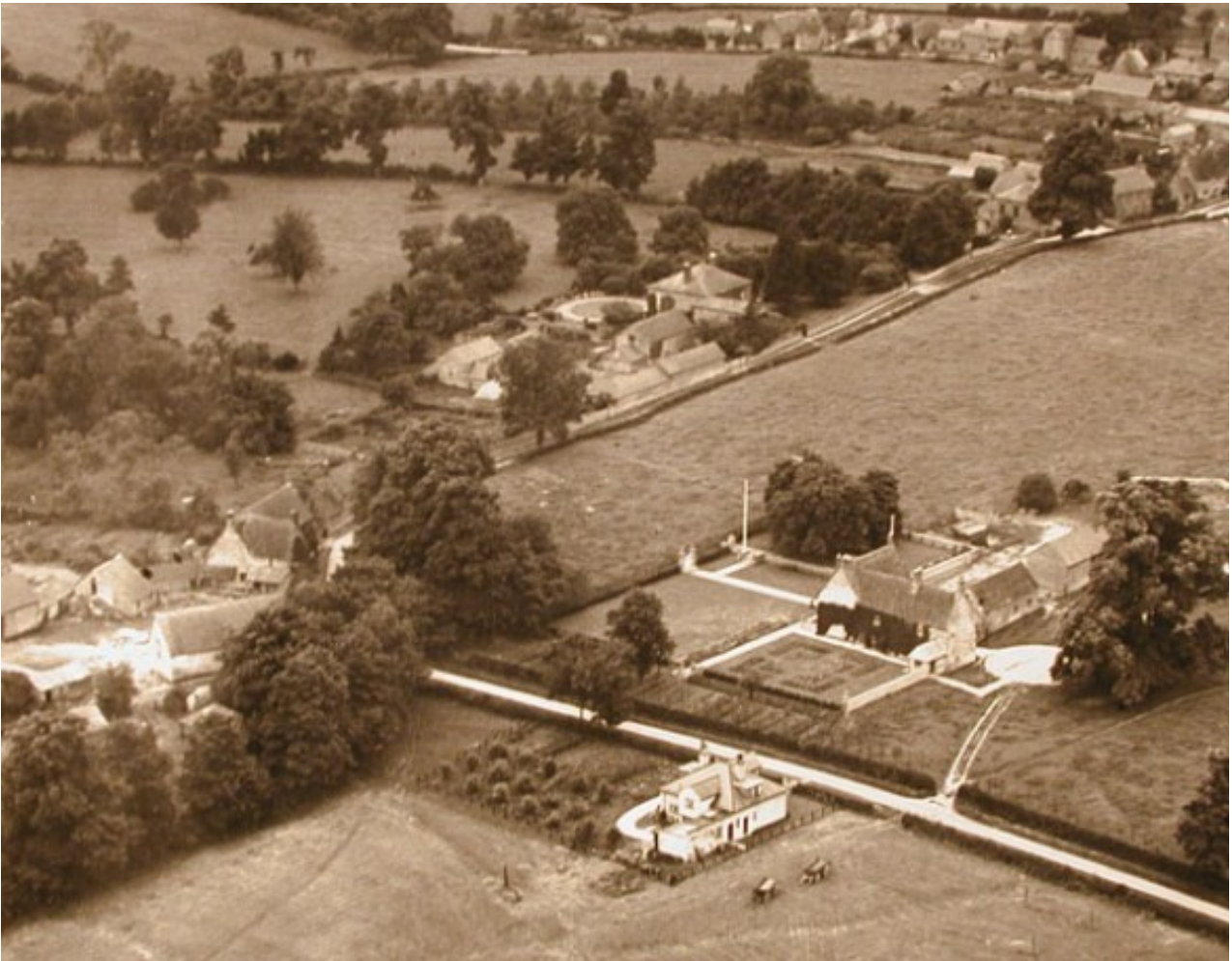


HOW “MANOR VIEW” LOST ITS VIEW OF THE MANOR



In this aerial view of Sulgrave Manor from the early 1920s, a then recently erected bungalow can be seen on the opposite side of Little Street from the Manor's famous rose garden. There being no planning control in those days, no-one had been consulted about the construction of this building. At their next visit to the Manor, the senior management were so offended by the presence of the bungalow that they "required its removal before their next visit"! It was taken down and re-erected where it now stands, the last house on the left hand side of the road when leaving the village along the Moreton Road. Ironically, it is still called "Manor View".

Colin Wootton